

# 白菜与甘蓝之间体细胞杂交种获得与遗传特性鉴定

廉玉姬

临沂大学 生命科学学院, 山东 临沂 276005

廉玉姬. 白菜与甘蓝之间体细胞杂交种获得与遗传特性鉴定. 生物工程学报, 2012, 28(9): 1080–1092.

Lian YJ. Production and characterization of a somatic hybrid of Chinese cabbage and cabbage. Chin J Biotech, 2012, 28(9): 1080–1092.

**摘要:** 为拓宽白菜育种的基因资源, 改良白菜品质, 以白菜 (*Brassica campestris*,  $2n=20$ , AA) 和甘蓝 (*B. oleracea* L. var. *capitata*,  $2n=18$ , CC) 的子叶和下胚轴为材料分离、制备原生质体。采用 40% 聚乙二醇 (Polyethylene glycol, PEG) 进行原生质体融合。融合细胞在以 0.3 mol/L 蔗糖、0.3 mol/L 葡萄糖为渗透稳定剂, 附加 1.0 mg/L 2,4-D + 0.5 mg/L 6-苄氨基嘌呤 (6-BA) + 0.1 mg/L 1-萘乙酸 (NAA) + 1.0 mg/L 激动素 (Kinetin, Kin) 的改良 K8p 培养基中培养并诱导细胞分裂。小愈伤组织经增殖培养后在 MS + 0.2 mg/L 玉米素 (Zantin, ZEA) + 1 mg/L 6-BA + 0.5 mg/L Kin + 0.4 mg/L NAA 的固体分化培养基上诱导出不定芽。30 d 后再转入 MS 基本培养基, 获得完整的再生植株。将生根的植株转移到花盆, 并对其杂种性质进行形态学、细胞学和分子生物学鉴定。结果表明, 经细胞融合分裂出的 320 个愈伤组织中, 获得了 35 棵再生植株, 其再生率达 10.94%。形态学观察显示, 绝大多数再生植株的叶面积较大, 株型和叶型为两种杂交亲本的中间型, 部分植株的叶片浓绿、肥厚。染色体计数结果显示, 36.4% 的再生植株染色体数为  $2n=38$ ; 36.4% 的再生植株的染色体数为  $2n=58\sim60$ ; 27.2% 的再生植株的染色体数为  $2n=70\sim76$ , 超过两个融合亲本的染色体数的总和。流式细胞仪测定 DNA 含量显示, 再生植株 DNA 含量变化比较大, 其结果与染色体鉴定结果相吻合。随机扩增多态性 DNA (Random amplified polymorphic DNA, RAPD) 和基因组原位杂交 (Genomic *in situ* hybridization, GISH) 分析结果证明再生植株具有双亲基因组。体细胞杂种花粉育性比较低, 杂交、回交后其育性逐渐获得恢复, 与白菜回交后代逐渐恢复了育性。通过体细胞杂交和回交, 杂交获得了形态变化广泛的个体, 为白菜的品种育种提供多样的种质资源。

**关键词:** 体细胞杂交, 植株再生, 基因组原位杂交, 随机扩增多态性 DNA, 染色体数, 后代

**Received:** March 12, 2012; **Accepted:** July 2, 2012

**Supported by:** Agricultural R&D Promotion Center, Ministry for Food, Agriculture, Forestry and Fisheries, Republic of Korea (No. 204027-02-1-SB010).

**Corresponding author:** Yuji Lian. Tel: +86-539-8766310; E-mail: lianyuji@lyu.edu.cn.

韩国农林水产部农林技术管理中心项目 (No. 204027-02-1-SB010) 资助。

# Production and characterization of a somatic hybrid of Chinese cabbage and cabbage

Yuji Lian

College of Life Science, Linyi University, Linyi 276005, Shandong, China

**Abstract:** In order to broaden Chinese cabbage gene pool, we conducted interspecific somatic hybridization between Chinese cabbage (*Brassica campestris*,  $2n=20$ , AA) and Cabbage (*B. oleracea*,  $2n=18$ , CC). Protoplasts were isolated from 10-day-old cotyledons and hypocotyls of young seedlings, and fused by 40% polyethylene glycol (PEG). Fused cells were cultured in modified K8p liquid medium supplemented with some plant growth regulators. Fusion products were characterized by their morphological, cytological and molecular biological traits. The results showed that, a total of 35 regenerated green plants were obtained from 320 calli, the plant regeneration frequency was 10.94%, and eleven of which were survived in greenhouse. All regenerants were true hybrids as confirmed by randomly amplified polymorphic DNA (RAPD) and genomic *in situ* hybridization (GISH) analysis. Ploidy levels of hybrid plants were determined by chromosome counting and flow cytometry. The sum of the chromosome number ( $2n = 38$ ) from the two fusion parents were found in 36.4% of regenerants; another 36.4% had chromosomes range to 58–60; 27.2% had more chromosomes ranges to 70–76. All regenerated plants produced normal flowers. We investigated the pollen fertility and seed set after self-pollination and backcrossing with the parental species. For hybrids with chromosomes more than 38 it was possible to obtain some seeds when they after self-pollination. Within the group of hybrids with 38 chromosomes, seed set were very variable, only 0.11 seeds per pod by self-pollination, 0.23–0.76 by open-pollination, 0.02–0.04 by backcrossing with Chinese cabbage. Progeny lines obtained by self-pollination had larger leaves and leaf shapes intermediate of the parental species. Pollen fertility was gradually recovered in the first and second progenies. The backcrossing progeny lines, as a whole, exhibited morphologies were similar to Chinese cabbage. Morphological variations were observed among the somatic hybrids and their progenies.

**Keywords:** somatic hybridization, regeneration, genomic *in situ* hybridization, random amplified polymorphic DNA, chromosome number, progeny

## Introduction

The enrichment of cultivated gene pools via introgression of favorable genes/gene complexes from wild allies is currently a priority in many crop improvement programs. Extensive genomic resources in the Brassicaceae family, to which the genus *Brassica* belongs, provide the basis for this improvement. However, the incompatibility between most wild and cultivated species, coupled with low fertility in F1 hybrids, severely restrain the chances of introgression of desirable traits<sup>[1-2]</sup>. Somatic hybridization provides a means to overcome sexual incompatibility and has been used to obtain many intraspecific, interspecific, intergeneric, intertribal,

and even interfamilial somatic hybrids<sup>[3-6]</sup>. This technology allows intrageneric hybridizations as well as the production of intergeneric hybrids and cybrids<sup>[7]</sup>.

Protoplast technology has been extensively applied in the *Brassica* species by fusing protoplasts from *B. campestris* and *B. oleracea* to widen their genetic diversity, among other things<sup>[8-10]</sup>. Other examples of interspecific somatic hybridization between *B. campestris* and *B. oleracea* have been reported, including the transfer of economic traits such as cytoplasmic male sterility<sup>[11-14]</sup> and disease resistance<sup>[15-16]</sup>. In this present study, somatic hybrids that have valuable traits from both Chinese cabbage and cabbage were produced to broaden their

gene pool. The somatic hybrids and their progenies were characterized by investigating their morphological, cytological, and molecular biological characteristics using flow cytometry, random amplified polymorphic DNA (RAPD), genomic *in situ* hybridization (GISH), and plant morphological comparison.

## 1 Materials and methods

### 1.1 Plant materials

Inbred lines of *B. oleracea* L. var. *italica* (cabbage), and *B. campestris* (Chinese cabbage) were used as plant materials in somatic hybridization. The seeds were surface-sterilized using 70% ethyl alcohol for 30 s, followed by 15 min in 50% commercial Chlorox bleach solution. Exactly two drops of Tween-20 were added to the seeds, which were then rinsed three times with sterile distilled water. The sterilized seeds were germinated and propagated *in vitro* on a Murashige and Skoog (MS)<sup>[17]</sup> medium supplemented with 3% sucrose and solidified with 0.8% agar under controlled conditions (25 °C, 16 h photoperiod, 84  $\mu\text{mol}/(\text{m}^2\cdot\text{s})$ , and under white fluorescent light).

### 1.2 Protoplast isolation, fusion, culture, and plant regeneration

Protoplasts of Chinese cabbage and cabbage were isolated from 10-day-old seedlings using an enzyme solution containing 0.4 mol/L mannitol, 50 mmol/L  $\text{CaCl}_2\cdot 2\text{H}_2\text{O}$ , 1% cellulysin (Calbiochem, USA), and 0.5% macerozyme (Calbiochem, USA) at pH 5.8. Protoplast isolation and fusion were performed as described by Lian and Lim<sup>[18]</sup>. The fused protoplasts were cultured in modified K8p medium<sup>[19]</sup> supplemented with 1 mg/L 2,4-dichlorophenoxyacetic acid (2,4-D), 0.5 mg/L 6-benzylaminopurine (6-BA), 0.1 mg/L 1-naphthaleneacetic acid (NAA), and 1 mg/L Kinetin (Kin) to promote cell division. The protoplasts were first cultured in 6 mm plastic Petri dishes containing 1 mL to 1.5 mL liquid culture medium. The Petri dishes were then sealed with Parafilm<sup>®</sup> and incubated at 25 °C in the

dark. When the small calli reached diameters of 2 mm to 3 mm, they were transferred to the regeneration medium containing 0.2 mg/L Zeatin (ZEA), 1 mg/L 6-BA, 0.5 mg/L Kin, and 0.4 mg/L NAA. The calli were solidified by adding 8 g/L agar at pH 5.8 for shoot regeneration at 25 °C under fluorescent light at 84  $\mu\text{mol}/(\text{m}^2\cdot\text{s})$  and a 16 h photoperiod. The calli were transferred to a new medium every 2 to 3 weeks, and the regenerated shoots were transferred to an MS basal medium supplemented with 0.2 mg/L NAA for growth and rooting.

### 1.3 Ploidy estimation using flow cytometry

The fluorescence of the samples was measured on a Partec flow cytometer (Partec PA-I, Germany) equipped with a high-pressure mercury lamp. A total of 0.2 g of fresh leaves from the regenerated plants and fusion parents were excised, chopped, and incubated in 2 mL of the nuclear extraction buffer (high-resolution DNA kit type P, Solution A; Partec) for 1 min. The resulting mixture was then filtered for 30 min using Partec Celltrics<sup>™</sup> and then stained for 2 min with 1 mL of Partec HR-B solution. The *B. oleracea* and *B. campestris* diploids were used as controls, against which the relative fluorescence intensities from the regenerated plants were compared.

### 1.4 Random amplified polymorphic DNA (RAPD) analysis

Total DNA was isolated from the leaves of greenhouse-grown parental lines and 11 regenerated plants following the protocols of the cetyltrimethylammonium bromide (CTAB) method<sup>[20]</sup>. RAPD analysis was also conducted on 10 putative somatic hybrids and protoplast fusion parents. In total, 30 primers (Operon Technologies, USA) were tested to identify those that can produce specific bands in both fusion parents. The amplification conditions were 35 cycles of 94 °C for 40 s, 40 °C for 60 s, and 72 °C for 60 s. Amplification products were analyzed by electrophoresis in 1.0% (W/V) agarose gel and detected by staining with ethidium bromide. The

gels were photographed under UV light.

### 1.5 Chromosome counting and genomic *in situ* hybridization (GISH)

The root tips were pretreated with 0.002 mol/L 8-hydroxyquinoline at room temperature for 1 h, fixed with 3:1 (V/V) ethyl alcohol: acetic acid, and transferred to absolute alcohol at 4 °C for at least 24 h to confirm the chromosome number of the putative somatic hybrids. They were stored in 70% (V/V) ethanol at 4 °C prior to chromosomal observation. Chromosome preparations were done according to the method described by Lian<sup>[14]</sup>.

Genomic DNA of *B. campestris* was labeled with fluorescein-11-dUTP via the nick translation method using a nick-translation kit (Boehringer-11-Mannheim, Roche, Germany) and was used as a probe. The average fragment length was 100 bp to 200 bp. For the GISH analysis, genomic-blocking DNA was boiled in water containing 10 mol/L NaOH for 40 min to 45 min. The probe and blocking DNA concentrations in the hybridization mixture were 3 and 20 µg/mL, respectively. *In situ* hybridization was performed according to the methods of Leitch<sup>[21]</sup>. The hybridization signals of the *B. campestris* probes were detected using fluorescein isothiocyanate-anti-avidine (FITC). Chromosomes were counterstained with propidium iodide (Roche, Basel, Switzerland), mounted in an antifade solution (Vector Laboratories, Cambridge, MA, USA), and examined using fluorescence microscopy.

### 1.6 Morphological comparison

The morphological characteristics, such as leaf shape, size, and flower color, of the protoplast fusion plants were investigated and compared with those of

the fusion parents. Putative somatic hybrids were acclimatized on a mixture of peat moss and perlite during flowering induction. When the plant growth reached the 14-leaf stage, plant vernalization was performed at 4 °C for 45 days. After a low-temperature treatment, the plants were placed in a greenhouse under a 24 h illumination (20 Klux). The morphologies and fertilities of the progenies and seed set from the first and second generations were also investigated.

## 2 Results and discussion

### 2.1 Protoplast fusion and plant regeneration

In this present experiment, high yield of protoplasts was obtained from healthy germinating seedlings (Fig. 1A). The polyethylene glycol (PEG)-mediated protoplasts (Fig. 1B) were cultured in 2 mL of the modified K8p medium containing 1 mg/L 2,4-D, 0.5 mg/L 6-BA, 0.1 mg/L NAA, and 1 mg/L Kin. After two days of culture, the first cell division occurred, and the 5- to 7-day cultures were transferred to Kao's basal medium<sup>[22]</sup> containing 0.25 mg/L 2,4-D, 0.025 mg/L 6-BA, 0.025 mg/L NAA, and 0.25 mg/L Kin. The medium was supplemented with 6% mannitol and semi-solidified with 0.1% agarose. When microcalli (Fig. 1C) reached diameters of 2 mm to 3 mm, they were transferred to a shoot induction medium added with a number of plant growth regulators, namely, 0.2 mg/L ZEA, 1 mg/L 6-BA, 0.5 mg/L Kin, and 0.4 mg/L NAA, as well as 3% sucrose and 0.8% agar. After 3 months of proliferation, calli with small greenish nodules produced shoots (Fig. 1D). The

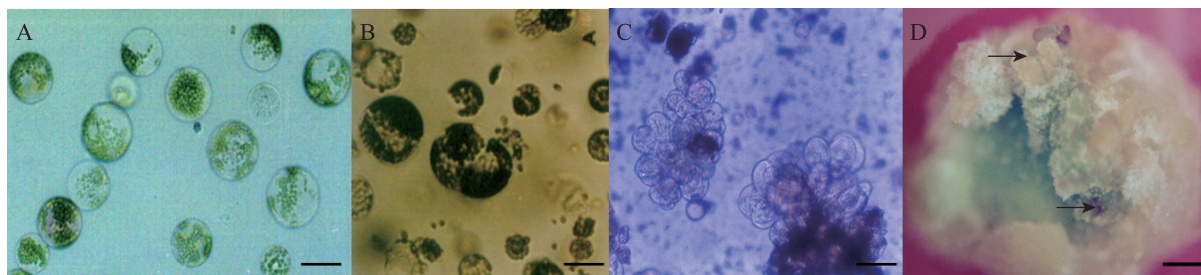


Fig. 1 Protoplast isolation, fusion and cell culture. (A) Isolated protoplast from cotyledons (Bar=50 µm). (B) Fused protoplast (Bar=50 µm). (C) Cell division (Bar=50 µm). (D) Regenerated plants from calli (black arrows). Bar=1 mm.

production of shoots is often associated with root hair formation on the callus. A total of 35 regenerated green plants were obtained from 320 calli, and the plant regeneration frequency was 10.94%. All regenerated plants were transferred to pots, and eleven survived in the greenhouse, they were marked as No.1 to No.11.

### 2.1 Ploidy estimation using flow cytometry

Flow cytometry is a useful technique in detecting the variation in the ploidy status among genotypes of the same species, such as that of *B. napus*<sup>[23]</sup>, as well as in interspecific hybrids<sup>[24-25]</sup>. Flow cytometry is also widely used to study the genome size and stability of different plant materials cultured *in vitro*<sup>[26-28]</sup>. The hybridity of four plants with different chromosome numbers were confirmed using a ploidy analyzer, as previously described by Arumuganathan and Earle<sup>[24]</sup>.

In this study, flow cytometry analysis reveals variations in the ploidy level of the somatic hybrids, and the typical position of the histograms of the fluorescence was obtained. *B. campestris* showed one peak with a diploid at around channel 75 (Fig. 2A), according to the Partec User Manual. The peak of the *B. oleracea* diploid was located at around channel 50 (Fig. 2B). The peaks of the four regenerated plants (No.1 to No.4) after the protoplast fusions appeared at the channel near 150, indicating that the tetraploid somatic hybrid was derived from a combination of *B. campestris* and *B. oleracea* genomes (Fig. 2C). The peaks of another four plants (No.5 to No.8) appeared at the channel 250, indicating that the hexaploid somatic hybrid was regenerated from cell fusion (Fig. 2D). The peaks of three putative hybrids (No.9 to No.11) appeared at channel 350, suggesting that the polyploid plant was obtained through protoplast fusion and cell (Fig. 2E, F).

### 2.2 RAPD analysis

The putative somatic hybrids were further confirmed by RAPD analysis using 40 primers on the basis of morphological and chromosomal observations. The profiles of the amplified products

from both parents obtained using the OPA-17 (5'-GA CCGCTTGT-3') primer were clearly polymorphic, and the putative hybrid plants showed specific bands characteristic of the two parents (Fig. 3). These results indicate that genetic materials from both parents were successfully incorporated into the somatic hybrids. The RAPD markers were frequently used for characterization of nuclear genomes. Such markers require very small quantities of DNA and generally reveal dominant alleles. The markers allow the polymorphic amplification of each parental genotype, which is necessary to confirm the presence of both genomes in putative hybrids<sup>[29]</sup>.

### 2.3 Chromosome counting and GISH analysis

All putative somatic hybrids had between 38 and 72 chromosomes. The plants were classified into three types according to the chromosome number, as follows: type I, which included 4 plants (No.1 to No.4), possess 38 chromosomes corresponding to the sum of those of *B. campestris* and *B. oleracea* (Fig. 4A, B); type II, which included 4 plants (No.5 to No.8), have 58 to 60 chromosomes (Fig. 4C); and type III, which included 3 plants (No.9 to No.11), have 70 to 76 chromosomes (Fig. 4E, F). These results are consistent with those of the flow cytometry analysis.

GISH was conducted on regenerated plants to characterize their chromosome composition. In three regenerants (No.9 to No.11), the signals of variable sizes and intensities were mainly located in the terminal and centromeric parts of some mitotic chromosomes (Fig. 4D-F). The DNA of the *B. campestris*, which exhibits yellow fluorescence, was thoroughly mixed with the hybrid chromosome (Fig. 4). GISH in *Brassica* was normally characterized by strong signals at centromeric heterochromatin and only very weak hybridization on chromosome arms<sup>[30-31]</sup>, for the low copy numbers of dispersed repeated sequences in *Brassica* and related genera. By contrast, in this experiment, *B. campestris* signals were distributed in certain parts of the chromosomes (Fig. 4A, C, E), or large patches of chromosomes such as in the centromeric (Fig. 4B, D, F)

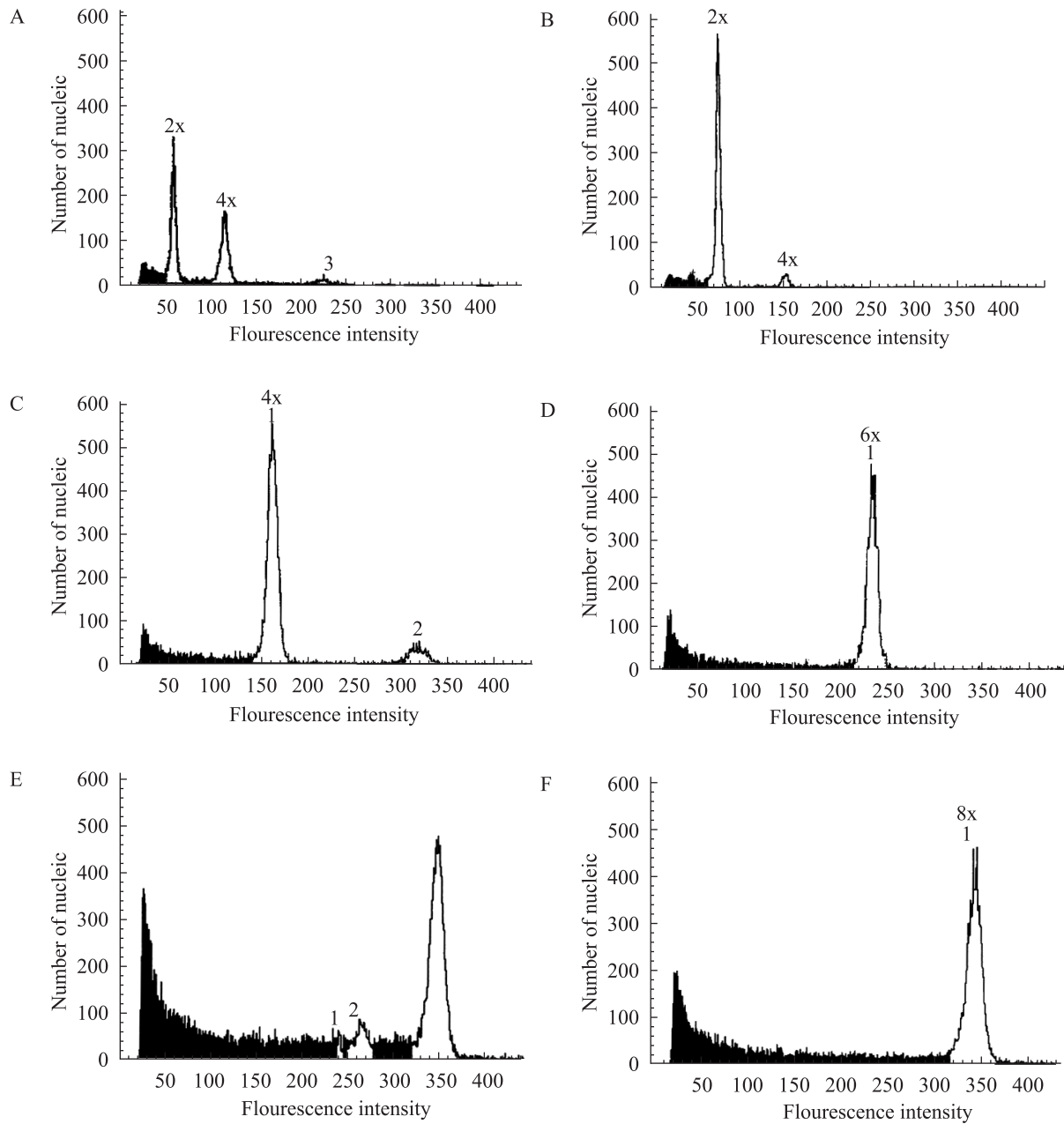


Fig. 2 Histogram of the fluorescence intensities for isolated cells from chopping leaves of fusion partners and somatic hybrids. (A) *B. campestris* (Chinese cabbage). (B) *B. oleracea* (cabbage). (C) Tetraploid somatic hybrids of No.1. (D) Hexaploid somatic hybrids of No.8. (E, F) Polyploid somatic hybrids of No.9 and No.11.

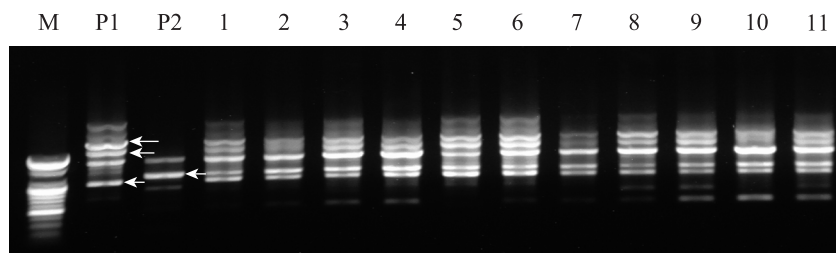


Fig. 3 RAPD analysis of parental lines and somatic hybrids. M: DNA marker. P1: *B. campestris*; P2: *B. oleracea*; 1–11: somatic hybrids (arrows show *B. campestris* and *B. oleracea* specific bands).

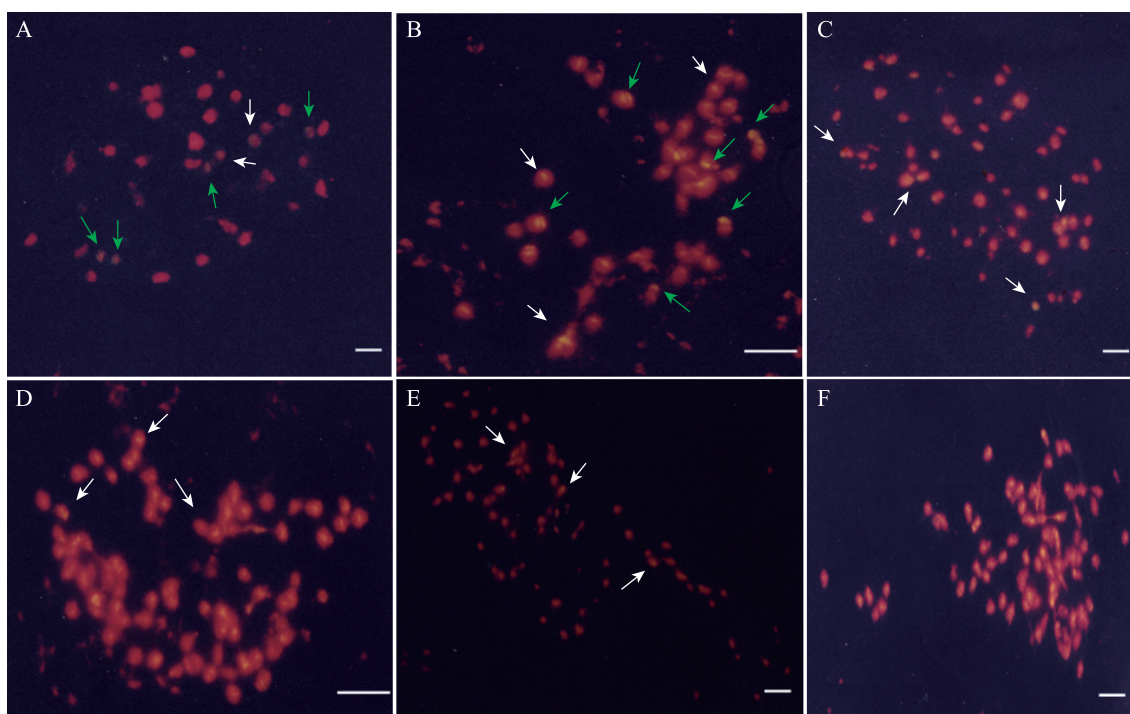


Fig. 4 Chromosome counting and genomic *in situ* hybridization of somatic hybrids between *B. oleracea* and *B. campestris*. Yellow signals (allows) are from the labelled *B. campestris* probe, chromosome counterstained by propidium iodide (PI). (A, B) Mitotic cells of somatic hybrids of No.1 and No.4 ( $2n=38$ ), *B. campestris* signals were distributed terminal positions (green arrow) or in the centromeric (white arrow) of chromosomes. (C) Mitotic cells of somatic hybrids of No.8 ( $2n=60$ ), *B. campestris* signals were distributed in certain parts (white arrow) of chromosomes. (D) Mitotic cells of somatic hybrids of No.9 ( $2n=72$ ), *B. campestris* signals were distributed large patches of chromosomes. (E) Mitotic cells of somatic hybrids of No.10 ( $2n=76$ ), *B. campestris* signals were distributed in certain parts (white arrow) of chromosomes. (F) Mitotic cells of somatic hybrids of No.11 ( $2n=76$ ), *B. campestris* signals were distributed large patches of chromosomes. Bar=5  $\mu\text{m}$ .

and terminal positions (Fig. 4B) of chromosomes. No intact chromosomes from *B. campestris* were observed in these regenerants. Similar results were reported in hybrids plants of the *Brassica* species<sup>[32-33]</sup>.

## 2.4 Morphological characterization of somatic hybrids

The regenerated plants and fusion parents were simultaneously transferred into pots and cultivated in a greenhouse, and their morphological traits were



compared. Wide variations in morphology were observed, especially within the group of plants with abnormal chromosome numbers. The Chinese cabbage has enlarged petioles (Fig. 5A-a), whereas cabbage has narrow petioles (Fig. 5A-b). The petioles of a somatic hybrid were intermediate to those of the parents (Fig. 5A-c). The putative hybrids exhibited varied morphologies compared with those of the regenerated plants and their fusion parents. Four plants with 38 chromosomes showed intermediate leaf morphology (Fig. 5A-1 to 4), and seven plants had thicknesses comparable to other regenerants and their fusion parents (Fig. 5A-5 to 11).

Four mature plants, whose leaves were crenate/lyrate, deep green, thin, and covered with a waxy powder, were similar to cabbage (Fig. 5B-1 to 4). Four plants whose leaves were uncrenate/lyrate, green, with a waxy coating exhibited morphologies intermediate of those of the fusion parents (Fig. 5B-5 to 8). Three plants had the most thick, deep green and uncrenate/lyrate leaves with waxy powder, which is similar to cabbage (Fig. 5B-11).

After vernalization, all regenerated plants and fusion parents exhibited bolting after two months of cultivation under greenhouse conditions. The floral

apex branching patterns were intermediate of those of cabbage and Chinese cabbage with small, loosely branched terminal heads.

## 2.5 Analysis of the seed set

Some seeds can be obtained from hybrids with more than 38 chromosomes after self-pollination. However, the seed set within the group of hybrids with 38 chromosomes significantly varies. The seed set was measured as the number of seeds/placenta. The somatic hybrids had 0.11 seeds per pod after self-pollination, even though the plants produced numerous pollen grains. The plants produced 0.03 to 0.04 seeds after backcrossing with Chinese cabbage, and had 0.23 to 0.76 seeds per pod after open-pollination (Table 1). Similar results have been reported by Yamagishi<sup>[34]</sup> and Chen<sup>[35]</sup>. Thus, somatic hybrids of Chinese cabbage and cabbage have low fertility, as reported by Sundberg<sup>[36]</sup>, probably due to somatic incompatibility. Therefore, the incorporation of the total genomes of two very distantly related species in a hybrid through somatic hybridization has two obvious disadvantages, namely, the introduction of a large amount of exotic genetic material accompanying the expected gene(s), and the genetic imbalance leading to somatic incompatibility<sup>[37]</sup>.

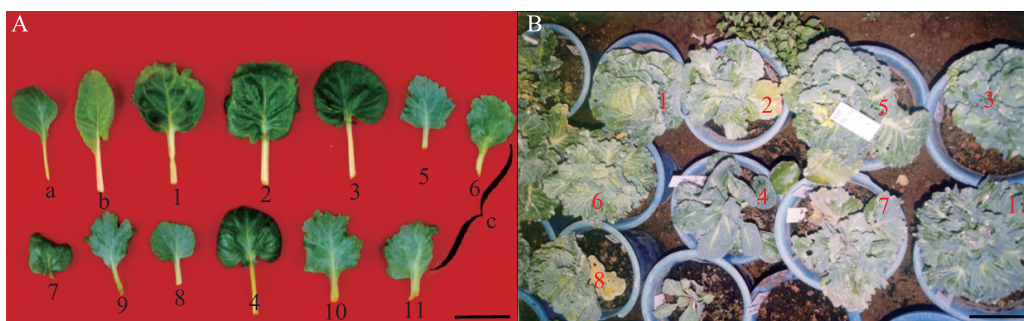


Fig. 5 Morphological traits of somatic hybrids. (A) a: the leaf shape of cabbage; b: the leaf shape of Chinese cabbage. No.1 to No.4: the leaf shapes of the regenerants with 38 chromosomes. No.5 to No.8: the leaf shapes of the regenerants with 58 to 60 chromosomes. No.9 to No.11: the leaf shapes of the regenerants with 70 to 76 chromosomes. (B) Regenerated plants from fusion derived calli. Bar=10 cm.



## 2.6 First generation via self pollination or backcrossing

Reciprocal sexual crosses were performed between two of somatic hybrids with 38 chromosomes and the fusion parents. Moreover, the somatic hybrids were self-pollinated. The progenies obtained from the crosses between the somatic hybrids and one of the fusion parent-Chinese cabbage exhibited Chinese cabbage like morphologies, including trichom density on the leaf surface and yellow flowers; however, purple stems,

petiole, and big flowers were also observed. The plants obtained in the first backcrossing generation appeared normal, exhibiting a morphology intermediate of those of the parents. They had branched growth habit, purple or white stems from the somatic hybrids, and leaves with intermediate size and shape (Table 2, 3). All progenies showed bluish waxy leaves, and the leaf color was very similar to that of cabbage. Pollen fertility was gradually recovered in the first and second progenies.

**Table 1 The fertility of somatic hybrids and their progenies (Chinese cabbage × cabbage, Unit: seeds/set)**

Generation	Self-pollination	Open-pollination	Back-crossing	
			Chinese×cabbage	Cabbage
Hybrid	0.11	0.23–0.76	0.02–0.04	—
The 1st generation	0.09–0.35	0.16–0.42	0.04–0.07	0.03–0.05
The 2nd generation	0.18–0.68	0.65–0.97	0.85–0.35	0.68–0.32

**Table 2 Characteristics of the first progenies from one somatic hybrid (SH1)**

No.	Stem color	Leaf shape	Flower size	No.	Stem color	Leaf shape	Flower size
21-1	White	Enlargement	Big	24-1	White	Narrow	Big
21-2	White	Narrow	Meddle	24-2	White	Intermediate	Meddle
21-3	Purple	Intermediate	Meddle	24-3	Purple	Intermediate	Big
21-4	Purple	Intermediate	Meddle	24-4	Purple	Narrow	Big
21-5	Purple	Narrow	Small	24-5	White	Enlargement	Big
22-1	Purple	Intermediate	Small	24-6	White	Enlargement	Big
22-2	Purple	Enlargement	Meddle	24-7	White	Intermediate	Big
22-3	Purple	Narrow	Meddle	24-8	White	Intermediate	Meddle
22-4	Purple	Narrow	Meddle	24-9	Purple	Enlargement	Meddle
22-5	White	Intermediate	Meddle	24-10	Purple	Narrow	Big
22-6	White	Narrow	Meddle	24-11	White	Intermediate	Meddle
22-7	White	Enlargement	Meddle	24-12	Purple	Narrow	—
23-1	Purple	Enlargement	Small	24-13	White	Narrow	—
23-2	Purple	Intermediate	Big	24-14	White	Narrow	Meddle
23-3	Purple	Intermediate	Meddle				
23-4	Purple	Narrow	Small				

Line 21: self pollination; Line 22: open-pollination; Line 23: cross pollination with one of fusion partner.

Table 3 Characteristics of the first progenies from one somatic hybrid (SH2)

No.	Stem color	Leaf shape	Flower size	No.	Stem color	Leaf shape	Flower size
25-1	White	Intermediate	Meddle	25-16	Purple	Narrow	Big
25-2	Purple	Narrow	Meddle	25-17	Purple	Intermediate	Small
25-3	Purple	Narrow	Big	25-18	Purple	Narrow	Meddle
25-4	Purple	Narrow	Big	25-19	Purple	Narrow	Meddle
25-5	Purple	Narrow	—	25-20	Purple	Enlargement	Meddle
25-6	Purple	Narrow	Small	25-21	Purple	Narrow	Big
25-7	Purple	Narrow	Small	25-22	Purple	Intermediate	Meddle
25-8	Purple	Narrow	Small	25-23	White	Intermediate	Meddle
25-9	Purple	Narrow	Small	25-24	White	Enlargement	Small
25-10	Purple	Intermediate	Big	25-25	Purple	Narrow	—
25-11	Purple	Enlargement	Meddle	25-26	Purple	Narrow	Meddle
25-12	Purple	Narrow	Meddle	25-27	Purple	Narrow	Big
25-13	Purple	Narrow	Big	25-28	White	Narrow	Meddle
25-14	Purple	Narrow	Big	25-29	White	Intermediate	Big
25-15	White	Narrow	Small	25-30	White	Enlargement	Big
				26-1	Purple	Enlargement	Meddle

Line 24: self pollination; Line 25: open-pollination; Line 26: back-cross with one of fusion partner.

2.7 Second backcrossing generation of the somatic hybrids

The BC1 plants were reciprocally crossed with *B. campestris* to determine the good combinations of crossing parents for the production of BC2 seeds. Based on the morphological characteristics, the progenies obtained from the BC1 seeds showed more suitable variations than those from the first generation. The plants from the first generation, which was similar to cabbage, showed less variation (Fig. 6A). However, most of the plants from the second generation, which were similar to Chinese cabbage, showed extensive variation; nevertheless, they still retained some of the Chinese cabbage phenotypes, such as wide petioles (Fig. 6B). The progenies of the somatic hybrids from backcrossing had the thick and waxy leaves of cabbage and wide petioles of Chinese cabbage, plants also showed both Chinese cabbage and cabbage morphological features (Fig. 6C). Their growth habits were more similar to that of cabbage. The second backcrossing generation showed variable leaf morphology

segregation, (Fig. 6D–F). With regard to leaf division and marginal incisions of the seedlings, the mature seeds showed undulate/lyrate characteristics. Petioles and midvein enlargement were also intermediate and narrow. Most of the hybrids showed curled-up leaves (Fig. 6F).

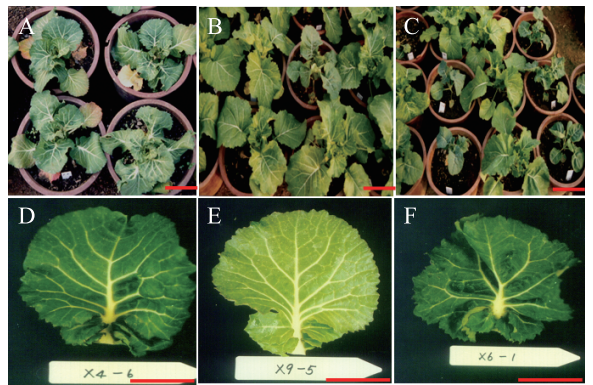


Fig. 6 Plant morphological features of the first and second progenies after crossing with Chinese cabbage. (A) The plants from the first generation. (B,C) The plants derived from the second generation. (D-F) Different shapes of leaves of the second generation plants. Bar = 5 cm.

### 3 Conclusion

In conclusion, somatic hybrids between *B. campestris* and *B. oleracea* and their backcross progenies were successfully produced, which were characterized by both molecular and cytological analysis. Random amplified polymorphic DNA (RAPD) and Genomic *in situ* hybridization (GISH) techniques were applied to demonstrate the introgressions of two genomes in interspecific somatic hybrids and their progenies.

These interspecific hybrids and their progeny have great potential as a bridge material for the transfer of economically important attributes from cabbage to Chinese cabbage. The agronomical potential of the hybrid progeny is currently under evaluation based on its advancement, improvement, and use.

**Acknowledgement** The author is grateful to Nam Kwon Baek for providing seed.

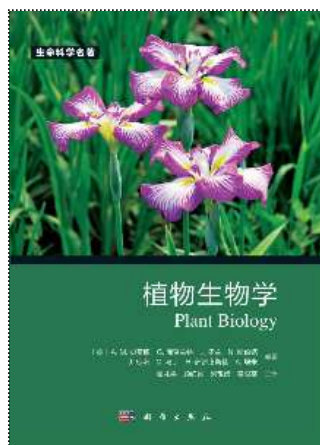
### REFERENCES

- [1] Inomata N. Crossability and cytology of hybrid progenies in the cross between *Brassica campestris* and three wild relatives of *B. oleracea*, *B. bourgeauii*, *B. cretica* and *B. montana*. Euphytica, 1993, 69(1/2): 7–17.
- [2] Choudhary BR, Joshi P. Crossability of *Brassica tournefortii* and *B. rapa*, and morphology and cytology of their F1 hybrids. Theor Appl Genet, 2001, 102(6/7): 1123–1128.
- [3] Waara S, Glimelius K. The potential of somatic hybridization in crop breeding. Euphytica, 1995, 85(1/3): 217–233.
- [4] Chen FH, Wang H, Li ZY. Production and genetic analysis of partial hybrids in intertribal crosses between *Brassica* species (*B. rapa*, *B. napus*) and *Capsella bursapastoris*. Plant Cell Rep, 2007, 26(10): 1791–1800.
- [5] Tu YQ, Sun J, Liu Y, Ge XH, et al. Production and characterization of intertribal somatic hybrids of *Raphanus sativus* and *Brassica rapa* with dye and medicinal plant *Isatis indigotica* Plant Cell Rep, 2008, 27(5): 873–883.
- [6] Du XZ, Ge XH, Yao XC, et al. Production and cytogenetic characterization of intertribal somatic hybrids between *Brassica napus* and *Isatis indigotica* and backcross progenies. Plant Cell Rep, 2009, 28(7): 1105–1113.
- [7] Dudits D, Maroy E, Praznovszky T, et al. Transfer of resistance traits from carrot into tobacco by asymmetric somatic hybridization: regeneration of fertile plants. Proc Natl Acad Sci USA, 1987, 84(23): 8434–8438.
- [8] Terada R, Yamashita Y, Nishiyashi S, et al. Somatic hybrids between *Brassica oleracea* and *B. campestris*: selection by the use of iodoacetamide inactivation and regeneration ability. Theor Appl Genet, 1987, 73(3): 379–384.
- [9] Rosén B, Halldén C, Heneen WK. Diploid *Brassica napus* somatic hybrids: characterization of nuclear and organellar DNA. Theor Appl Genet, 1988, 76(2): 197–203.
- [10] Ozminkowski RH, Jourdan PS. Expression of self-incompatibility and fertility of *Brassica napus* L. resynthesized by interspecific somatic hybridization. Euphytica, 1993, 65(2): 153–160.
- [11] Cardi T, Earle ED. Production of new CMS *Brassica oleracea* by transfer of “Anand” cytoplasm from *B. rapa* through protoplast fusion. Theor Appl Genet, 1997, 94(2): 204–212.
- [12] Sigareva MA, Earle ED. Direct transfer of a cold tolerant Ogura male sterile cytoplasm into cabbage (*Brassica oleracea* ssp. *capitata*) via protoplast fusion. Theor Appl Genet, 1997, 94(2): 213–220.
- [13] Lian YJ, Lin GZ, Zhao XM, et al. Production and genetic characterization of somatic hybrids between leaf mustard (*Brassica juncea*) and broccoli (*Brassica oleracea*). In Vitro Cell Dev Biol Plant, 2011, 47(2): 289–296.
- [14] Lian YJ, Lin GZ, Zhao XM. Morphological, cytological, and molecular characterization of

- hybrids and their progenies derived from the somatic hybridization of *Brassica campestris* and *Brassica oleracea*. Chin J Biotech, 2011, 27(11): 1586–1597.
- 廉玉姬, 林光哲, 赵小梅. 青花菜与白菜间体细胞杂种获得与遗传特性鉴定. 生物工程学报, 2011, 27(11): 1586–1597.
- [15] Hansen LN, Earle ED. Transfer of resistance of *Xanthomonas campestris* pv *campestris* into *Brassica oleracea* L. by protoplast fusion. Theor Appl Genet, 1995, 91: 1293–1300.
- [16] Ren JP, Dickson MH, Earle ED. Improved resistance to bacterial soft rot by protoplast fusion between *Brassica rapa* and *B. oleracea*. Theor Appl Genet, 2000, 100(15): 810–819.
- [17] Murashige T, Skoog F. A revised medium for rapid grown and bio-assays with tobacco tissue cultures. Physiol Plant, 1962, 15: 473–497.
- [18] Lian YJ, Lim HT. Plant regeneration of *B. juncea* through plant tissue and protoplast culture. J Plant Biotechnol, 2001, 3: 27–31.
- [19] Glimelius K, Mats D, Hugo FF. Selection and enrichment of plant protoplast heterokaryons of *Brassicaceae* by flow sorting. Plant Sci, 1986, 45: 133–141.
- [20] Doyle JJ, Doyle JI. Isolation of plant DNA from fresh tissue. Focus, 1990, 12: 13–15.
- [21] Leitch AR, Schwarzbacher T, Jackson D, et al. *In situ* Hybridization: A Practical Guide (Microscopy Guide No.27). Oxford: BIOS Scientific Publisher Ltd, 1994.
- [22] Kao KN, Michcharyluk MR. Nutritional requirements for growth of *Vicia hajastana* cells and protoplasts at a very low population density in liquid media. Planta, 1975, 126(2): 105–110.
- [23] Takahira J, Cousin A, Nelson MN, et al. Improvement in efficiency of microspore culture to produce doubled haploid canola (*Brassica napus* L.) by flow cytometry. Plant Cell Tiss Organ Cult, 2011, 104(1): 51–59.
- [24] Arumuganathan K, Earle ED. Estimation of nuclear DNA content of plants by flow cytometry. Plant Mol Bio Rep, 1991, 9(3): 229–233.
- [25] Tiwari JK, Sarkar PD, Pandey SK, et al. Molecular and morphological characterization of somatic hybrids between *Solanum tuberosum* L. and *S. etuberosum* Lindl. Plant Cell Tiss Organ Cult, 2010, 103(2): 175–187.
- [26] Clarindo WR, de Carvalho CR, Araújo FS et al. Recovering polyploid papaya *in vitro* regenerants as screened by flow cytometry. Cell Tiss Organ Cult, 2008, 92(2): 207–214.
- [27] Makowczyńska J, Andrzejewska-Golec E, Sliwiska E. Nuclear DNA content in different plant materials of *Plantago asiatica* L. cultured *in vitro*. Plant Cell Tiss Organ Cult, 2008, 94(1): 65–71.
- [28] Mallón R, Rodríguez-Oubiña J, González ML. *In vitro* propagation of the endangered plant *Centaurea ultrainae*: assessment of genetic stability by cytological studies, flow cytometry and RAPD analysis. Plant Cell Tiss Organ Cult, 2010, 101(1): 31–39.
- [29] Fock I, Collonnier C, Luisetti J, et al. Use of *Solanum stenotomum* for introduction of resistance to bacterial wilt in somatic hybrids of potato. Plant Physiol Biochem, 2001, 39(10): 899–908.
- [30] Snowdon RJ, Köhler W, Friedt W, et al. Genomic *in situ* hybridization in *Brassica* amphidiploids and interspecific hybrids. Theor Appl Genet, 1997, 95(8): 320–324.
- [31] Wang YP, Snowdon RJ, Rudloff E, et al. Cytogenetic characterization and *fae1* gene variation in progenies from asymmetric so somatic hybrids between *Brassica napus* and *Crambe abyssinica*. Genome, 2004, 47(4): 724–731.
- [32] Li ZY, Ceccarelli M, Minelli S, et al. High efficiency production and genomic *in situ* hybridization analysis of *Brassica* aneuploids and homozygous plants. Sci China: Series C, 2003, 46(1): 104–112.
- [33] Ma N, Li ZY, Cartagena JA, et al. GISH and AFLP analyses of novel *Brassica napus* lines derived from one hybrid between *B. napus* and

- Orychophragmus violaceus*. Plant Cell Rep, 2006, 25(10): 1089–1093.
- [34] Yamagishi H, Terachi T. Molecular and biological studies on male-sterile cytoplasm in the Cruciferae. I. The origin and distribution of Ogura male-sterile cytoplasm in Japanese wild radishes (*Raphanus sativus* L.) revealed by PCR-aided assay of their mitochondrial DNAs. Theor Appl Genet, 1994, 87(8): 996–1000.
- [35] Chen FH, Wang H, Li ZY. Production and genetic analysis of partial hybrids in intertribal crosses between *Brassica* species (*B. rapa*, *B. napus*) and *Capsella bursa pastoris*. Plant Cell Rep, 2007, 26(10): 1791–1800.
- [36] Sundberg E. Somatic hybrids and cybrids within *Brassicaceae*: studies focused on refining production methods and identifying factors influencing the genetic composition of somatic hybrids[D]. Uppsala: Swedish University of Agricultural Sciences. 1991: 7–44.
- [37] Liu JH, Xu XY, Deng XX. Intergeneric somatic hybridization and its application to crop genetic improvement. Plant Cell Tiss Org Cult, 2005, 82(1): 19–44.

## 科学出版社科学出版中心生命科学分社新书推介



### 植物生物学

书号: 978-7-03-034067-2/Q·2900

作者: (英) Alison M. Smith 等 编著; 瞿礼嘉 等 译

定价: 180

**内容简介:** 本书由欧洲著名植物分子生物学研究所 John Innes Center 的七位杰出植物生物学家合作撰写。全书共分九章, 首先介绍现代植物起源研究, 并简述植物基因组和遗传学的特征, 随后阐述植物细胞代谢和发育等方面的基础知识和研究进展, 以及植物对环境信号的接受和应对生物胁迫和非生物胁迫的策略, 最后讨论植物学研究发展与人类社会的关系。本书内容全面、系统、权威, 反映了当前人们对植物学在分子层面上的最新、最前沿的理解。全书结构简洁, 语言深入浅出, 图文并茂, 编排有序, 是植物生物学领域的一部全新的重要著作。

**读者对象:** 本书适合于植物学、分子生物学、生物化学、细胞生物学、农学等相关领域的高年级本科生、研究生、教师和科研人员阅读参考。

**编辑推荐:**

1. 作者为欧洲著名植物分子生物学研究所 John Innes Center 的七位杰出植物生物学家, 其中包括 *Plant Cell* 杂志现任主编 Cathie Martin。
2. 主译为北京大学教授、博导、长江学者。
3. 结构简洁, 内容深入浅出, 图文并茂, 编排有序, 是植物生物学领域最新的重要著作, 也是植物生物学研究的绝好教材和入门参考书。

**购书指南:**

学士书店: <http://www.xueshi.com.cn>; 当当网: <http://www.dangdang.com>;

亚马逊: <http://www.amazon.cn>; 京东图书: <http://book.360buy.com>;

<http://shop.sciencepress.cn/>

科学出版社 科学销售中心联系人: 周文宇

电话: 010-64022646, 010-64017321

E-mail: [zhouwenyu@mail.sciencepress.com](mailto:zhouwenyu@mail.sciencepress.com)